

Update 300-180 Dumps with VCE and PDF for Free (Question 121 - Question 140)

New 300-180 exam questions from PassLeader 300-180 dumps! Welcome to download the newest PassLeader 300-180 VCE and PDF dumps: <https://www.passleader.com/300-180.html> (450 Q&As --> 472 Q&As --> 494 Q&As)

P.S. Free 300-180 dumps are available on Google Drive shared by PassLeader:

https://drive.google.com/open?id=0B-ob6L_QjGLpNWtfazZEX1o5eWc

Read More CCNP Data Center Exam Dumps:

CCNP Data Center 300-160 Exam Dumps: <http://www.ciscovceplus.com/?s=300-160>

CCNP Data Center 300-165 Exam Dumps: <http://www.ciscovceplus.com/?s=300-165>

CCNP Data Center 300-170 Exam Dumps: <http://www.ciscovceplus.com/?s=300-170>

CCNP Data Center 300-175 Exam Dumps: <http://www.ciscovceplus.com/?s=300-175>

QUESTION 121

Refer to the exhibit. What can you deduce from this configuration?

.....

- A. This configuration is not taken from a fabric interconnect.
- B. This configuration refers to an uplink port on the fabric interconnect.
- C. Fabric link Eth1/1/3 is pinned to uplink port Eth1/1.
- D. A server in slot 3 is pinned to link 1 between IOM and the fabric interconnect.

Answer: D

QUESTION 122

Which Cisco UCS C Series command sequence initiates the sending of a technical support file to a TFTP server?

- A.

```
ucs /cimc # scope tech-support ucs /cimc/tech-support # set ip 10.1.1.1
ucs /cimc/tech-support *# set tftp-path showtechsupport
ucs /cimc/tech-support *#commit ucs /cimc/tech-support *#start
```
- B.

```
ucs /cimc # scope tech-support
ucs /cimc/tech-support # set tftp-ip 10.1.1.1
ucs /cimc/tech-support *# set path showtechsupport
ucs /cimc/tech-support *#commit ucs /cimc/tech-support *#start
```
- C.

```
ucs /cimc # scope support ucs /cimc/support # set tftp-ip 10.1.1.1
ucs /cimc/support *# set path showtechsupport
ucs /cimc/support *#commit ucs /cimc/support *#start
```
- D.

```
ucs /cimc # scope system-support
ucs /cimc/system-support # set tftp-ip 10.1.1.1
ucs /cimc/system-support *# set path showtechsupport
ucs /cimc/system-support *#commit ucs /cimc/system-support *#start
```

Answer: B

QUESTION 123

During a Cisco UCS firmware update via the UCS Manager GUI, you choose All from the Filter list in the Activate Firmware dialog box. Which statement about this action is true?

- A. Because many releases and patches have dependencies that require a specific order, this method is not preferred, and you should consult the release notes.
- B. This setting will work and UCS Manager will properly activate all elements in the correct order.
- C. This setting will have no effect, and you should always use the CLI to complete firmware upgrades.
- D. You should open a case with Cisco TAC to determine what to do.

Answer: A

QUESTION 124

Which option is the cause when a DIMM is marked as bad?

- A. More than 16000 errors were witnessed during test execution during BIOS.

- B. DIMM Blacklisting is enabled.
- C. The DIMM is missing.
- D. The bank of DIMMs is composed of different size DIMMs.

Answer: A

QUESTION 125

As an experienced technician, you are responsible for Technical Support in your company. A user calls to ask you with which Cisco UCS feature he could send specific functional data using call home. How will you reply?

- A. call home profiles
- B. call home alert groups
- C. call home port groups
- D. call home threshold groups

Answer: B

QUESTION 126

As an experienced technician, you should be familiar with components of the UCS solution. Which of the following have beacon LEDs? (Choose two.)

- A. fabric interconnect
- B. monitors
- C. blades
- D. chassis

Answer: CD

QUESTION 127

Refer to the following statements, which one about full-state backup is the most accurate?

- A. used for either a single or dual UCS catastrophic failure
- B. stored as gzipped tarball
- C. can be restored with no special requirements
- D. easy to modify as needed

Answer: A

QUESTION 128

Which two of the following descriptions best describe opt-in models? (Choose two.)

- A. A logical server opt-in model uses hardware values as identifiers
- B. A basec opt-in model uses hardware values as identifiers
- C. A logical server opt-in model uses virtualized identifiers
- D. A basec opt-in model uses virtualized identifiers

Answer: BC

QUESTION 129

Refer to the following items, which is contained in a user object of the UCS system contain? (Choose two.)

- A. Microsoft Active Directory credentials
- B. Authentication and Authorization credentials
- C. LDAP assignment
- D. Role assignment

Answer: CD

QUESTION 130

Which of the following statements correctly describes the high availability in the Cisco UCS?

- A. Each group is identified by a floating node ID
- B. A node is one of the two Fabric Interconnects
- C. A node is one of the two CMCs
- D. A group is a set of four nodes

Answer: B

QUESTION 131

On a Cisco Nexus 5000 Series Switch, which two options are valid traffic sources that can be monitored, when configuring a SPAN

session for a port channel?

- A. egress and the SAN port channel only
- B. ingress and the SAN port channel only
- C. ingress and egress only
- D. ingress, egress, and the SAN port channel

Answer: B

QUESTION 132

You attempt to boot a supported Linux operating system live image from the eUSB in a Cisco UCS blade-server environment, but the boot fails. Which option is the most likely cause of the failure?

- A. In the Service Profile, a device other than the eUSB is set first in the boot order for the server.
- B. The eUSB license is unavailable or the grace period of the license is expired.
- C. The blade servers are unable to boot from the eUSB. The eUSB is used only for virtual machines.
- D. Access to the eUSB is disabled for that blade server by Power Manager.

Answer: A

QUESTION 133

Hotspot

.....

Why is Virtual Fibre Channel interface 19 in err-disable state?

- A. Missing transceiver
- B. Virtual interface is not bound to a physical interface
- C. The associated physical interface is down
- D. VSAN to VLAN binding mis-configured

Answer: D

QUESTION 134

Hotspot

.....

Refer to Exhibit 2. Which of the following options is true about why this C-Series vHBA will not allow SAN boot?

- A. The WWPN and WWNN must match
- B. Persistent Binding is required by all operating systems
- C. The default VLAN must match the FCoE VLAN
- D. The Class of Service must be set to '1' to negotiate Priority Flow Control for FCoE traffic

Answer: A

QUESTION 135

Hotspot

.....





Refer to Exhibit 3. Which two statements are true if the Enable NIV Mode checkbox is selected on a Cisco VIC? (Choose two.)

- A. It enables N-Port Interface Virtualization on the VIC
- B. vNICs can fail over to another vNIC if there are communication problems
- C. NIV mode is required for FCoE
- D. vNICs can be assigned to a specific channel
- E. It allows for the creation of up to 12 vHBAs

Answer: BE

QUESTION 136

Hotspot

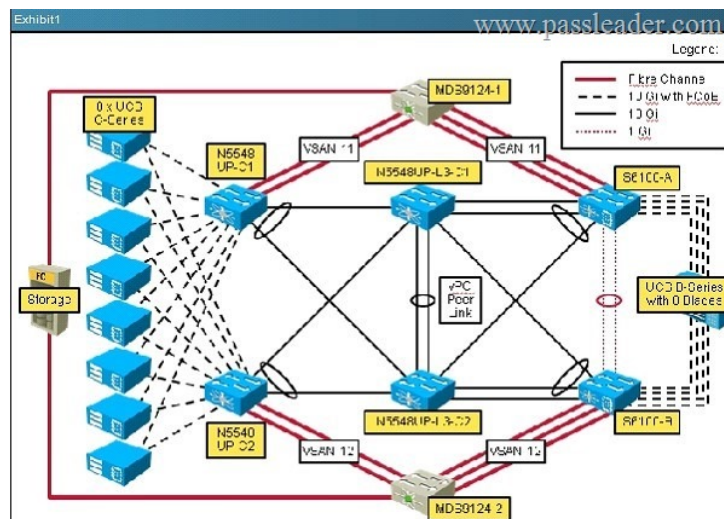
Instructions

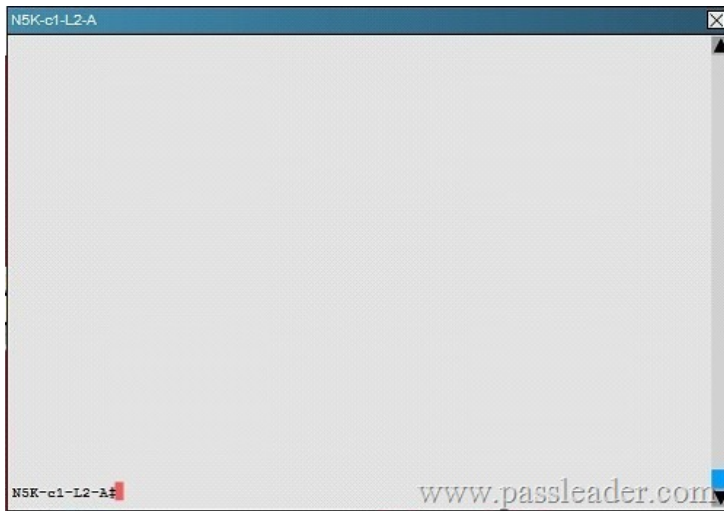
- Enter NX-OS commands on the device to answer multiple-choice questions.
- **THIS TASK DOES NOT REQUIRE DEVICE CONFIGURATION.**
- From Exhibit 1, click on the Cisco Nexus 5548UP switch named N5548UP-C1 to gain access to the console of the switch.
- There is no access to configuration mode.
- To access the multiple-choice questions, click on the numbered boxes on the left of the top panel.
- There are four multiple-choice questions with this task. Be sure to answer all four questions before selecting the Next button.
- This is a simulation, and not all NX-OS commands are implemented.

www.passleader.com

Scenario

In this item, you will use the NX-OS CLI to answer questions about the FCoE configuration on a Cisco Nexus 5548UP.





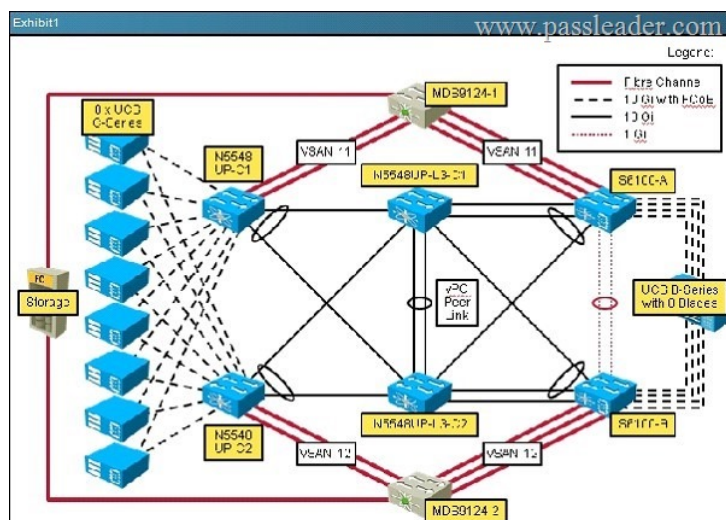
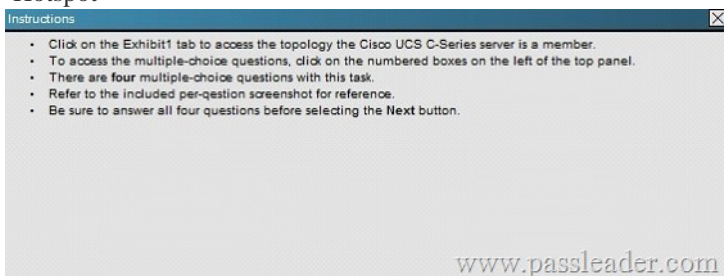
What is the FCF-MAC for this switch?

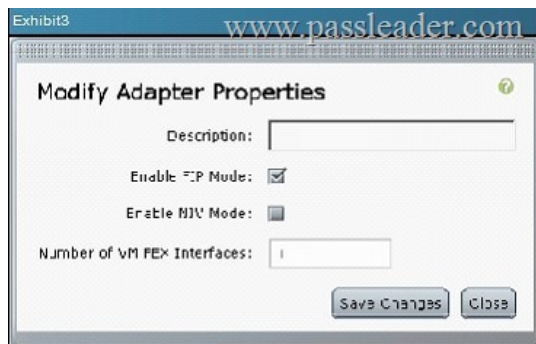
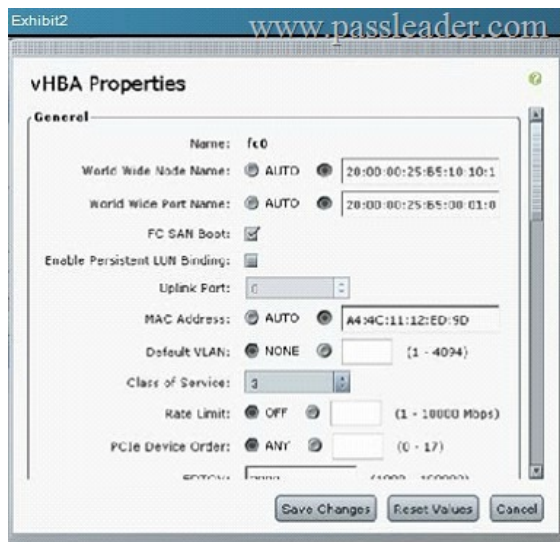
- A. 54:7f:ee:98:9b:39
- B. 54:7f:ee:98:9b:40
- C. 54:7f:ee:98:9b:41
- D. 54:7f:ee:98:9b:42
- E. 54:7f:ee:98:9b:43

Answer: E

QUESTION 137

Hotspot





- Refer to Exhibit 4. Which selection is true regarding the configured Write Cache policy on the RAID adapter?
- A. Data written is stored in the cache and also written through to the physical drives
 - B. Data written is stored in the cache and will be written to the physical drives when bandwidth is available
 - C. Write Through mode poses the risk of data corruption if a BBU is not installed

D. Write Through mode falls back to Write Back mode if the BBU fails

Answer: C

QUESTION 138

Hotspot

Instructions

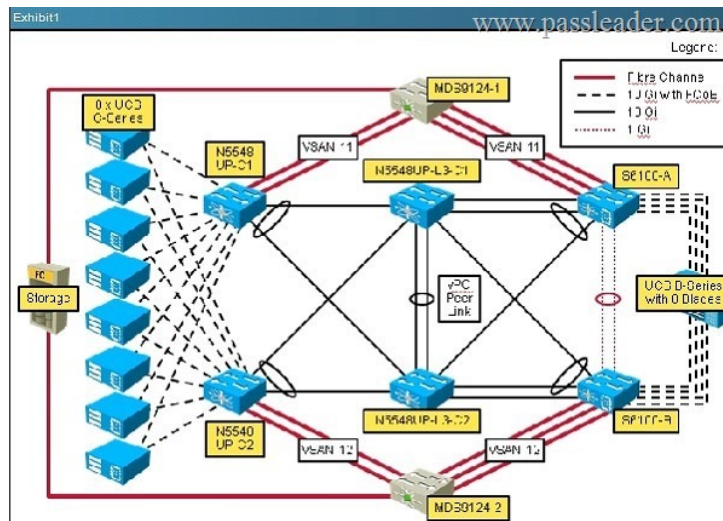
- Enter NX-OS commands on the device to answer multiple-choice questions.
- **THIS TASK DOES NOT REQUIRE DEVICE CONFIGURATION.**
- From Exhibit 1, click on the Cisco Nexus 5548UP switch named N5548UP-C1 to gain access to the console of the switch.
- There is no access to configuration mode.
- To access the multiple-choice questions, click on the numbered boxes on the left of the top panel.
- There are four multiple-choice questions with this task. Be sure to answer all four questions before selecting the Next button.
- This is a simulation, and not all NX-OS commands are implemented.

www.passleader.com

Scenario

In this item, you will use the NX-OS CLI to answer questions about the FCoE configuration on a Cisco Nexus 5548UP.

www.passleader.com



N5K-c1-L2-A

N5K-c1-L2-A

www.passleader.com

Which two virtual Fibre Channel interfaces are able to pass traffic VSAN 11? (Choose two.)

- A. 11
- B. 12

C. 13

D. 14

E. 15

F. 10

Answer: AB

QUESTION 139

Hotspot

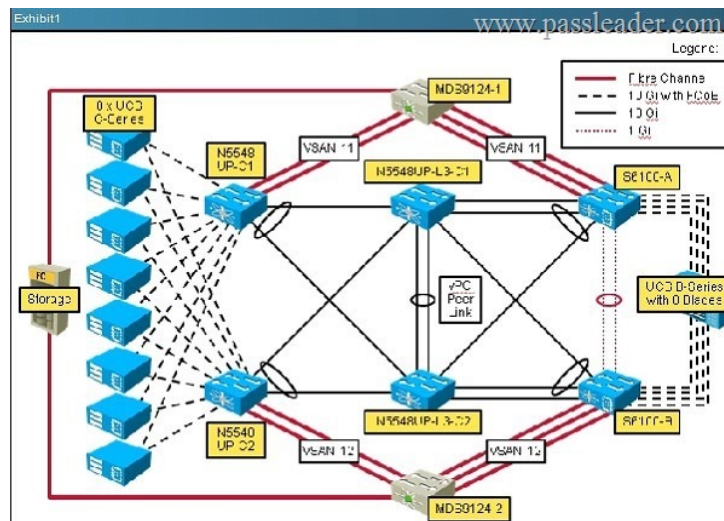
Instructions

- Enter NX-OS commands on the device to answer multiple-choice questions.
- **THIS TASK DOES NOT REQUIRE DEVICE CONFIGURATION.**
- From Exhibit 1, click on the Cisco Nexus 5548UP switch named N5548UP-C1 to gain access to the console of the switch.
- There is no access to configuration mode.
- To access the multiple-choice questions, click on the numbered boxes on the left of the top panel.
- There are four multiple-choice questions with this task. Be sure to answer all four questions before selecting the Next button.
- This is a simulation, and not all NX-OS commands are implemented.

www.passleader.com

Scenario

In this item, you will use the NX-OS CLI to answer questions about the FCoE configuration on a Cisco Nexus 5548UP.



A screenshot of a web browser window. The address bar at the top shows "NSK-c1-L2-A". The main content area is blank white. In the bottom-left corner, there is a small red square icon next to the text "NSK-c1-L2-A". In the bottom-right corner, the watermark "www.passleader.com" is visible.

What is the reason that no C-Series servers can access Fibre Channel storage from this Cisco Nexus 5548UP switch?

- A. Zoning mode mis-match with the MDS 9124
- B. There are no active Fibre Channel interfaces
- C. VSAN mis-match on Fibre Channel interfaces
- D. None of the virtual fibre channel interfaces are configured

Answer: A

QUESTION 140

Hotspot

Instructions

- Click on the Exhibit1 tab to access the topology the Cisco UCS C-Series server is a member.
- To access the multiple-choice questions, click on the numbered boxes on the left of the top panel.
- There are four multiple-choice questions with this task.
- Refer to the included per-question screenshot for reference.
- Be sure to answer all four questions before selecting the Next button.

www.passleader.com

Scenario

In this scenario, you will answer questions about Cisco UCS C-Series server configuration based on screenshots from the Cisco IMC GUI.

www.passleader.com

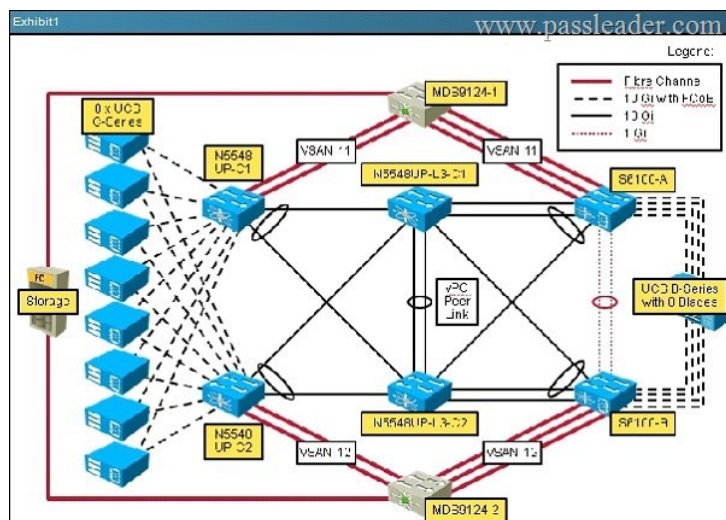


Exhibit2

www.passleader.com

vHBA Properties

General

Name: fc0

World Wide Node Name: AUTO 28:00:00:25:85:10:10:1

World Wide Port Name: AUTO 28:00:00:25:85:30:01:0

FC SAN Boot: ☒

Enable Persistent LUN Binding: ☐

Uplink Port: 0

MAC Address: AUTO A4:4C:11:12:ED:5D

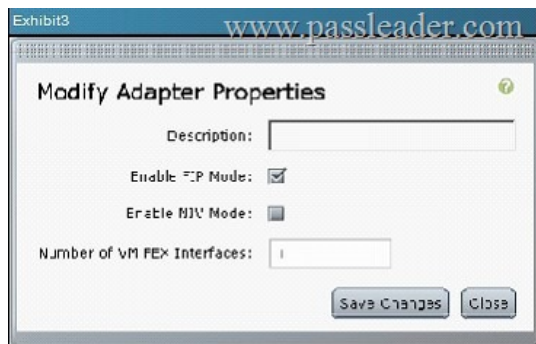
Default VLAN: NONE (1 - 4094)

Class of Service: 3

Rate Limit: OFF (1 - 10000 Mbps)

PCIe Device Order: ANY (0 - 17)

Save Changes Reset Values Cancel



Refer to Exhibit 5. Which of the following is true regarding password recovery for the Cisco IMC GUI interface?

- A. From the KVM Console, press F12 during POST to reset the credentials to admin/password.
- B. Type RECOVER into the Username field, and then type SYSTEM in the Password field to enter recovery mode.
- C. Refer to the model-specific Cisco UCS C-Series Hardware guide to learn the location of the recovery jumper on the server motherboard.
- D. Enter the Cisco IMC BIOS to reset the GUI password.

Answer: D

New 300-180 exam questions from PassLeader 300-180 dumps! Welcome to download the newest PassLeader 300-180 VCE and PDF dumps: <https://www.passleader.com/300-180.html> (450 Q&As --> 472 Q&As --> 494 Q&As)

P.S. Free 300-180 dumps are available on Google Drive shared by PassLeader:

https://drive.google.com/open?id=0B-ob6L_QjGLpNWtfazZEX1o5eWc

Read More CCNP Data Center Exam Dumps:

CCNP Data Center 300-160 Exam Dumps: <http://www.ciscovceplus.com/?s=300-160>

CCNP Data Center 300-165 Exam Dumps: <http://www.ciscovceplus.com/?s=300-165>

CCNP Data Center 300-170 Exam Dumps: <http://www.ciscovceplus.com/?s=300-170>

CCNP Data Center 300-175 Exam Dumps: <http://www.ciscovceplus.com/?s=300-175>