

100% Pass Guarantee PassLeader 300-370 Dumps with VCE and PDF for Free (Question 26 - Question 30)

New 300-370 exam questions from PassLeader 300-370 dumps! Welcome to download the newest PassLeader 300-370 VCE and PDF dumps: <http://www.passleader.com/300-370.html> (115 Q&As --> 147 Q&As --> 159 Q&As --> 173 Q&As)

P.S. Free 300-370 dumps are available on Google Drive shared by PassLeader:

https://drive.google.com/open?id=0B-ob6L_QjGLpM3ZXaF9TdmZSeUU

QUESTION 26

Which statement about the usage of the debug command in a Cisco Unified Wireless Network is true?

- A. Debug is enabled until manual shut off.
- B. Debug is a message logging severity 7.
- C. Debug is a restricted command and is not available in the AP CLI.
- D. Debug is available on the WLC serial console and web interface.

Answer: B

QUESTION 27

Two 5508 Wireless Lan Controllers are managing all Access Points throughout the network. The WLCs are located in different locations to provide geographical redundancy. A Mobility Group has been configured on both WLCs and has a UP status on both Controllers. The APs in location A are statically configured to use Controller A as the Primary and Controller B as the Secondary. If the WLC in location A goes offline, the APs successfully join the WLC in location B but they do not failover to their Primary configured Controller. What configuration task will fix this issue?

- A. Change the AP Failover Priority to critical.
- B. Enable AP Fallback globally on the WLC.
- C. Configure the WLC in location A as Primary using the CAPWAP AP Controller IP Address command on all the location A Access Points.
- D. Use DHCP Option 43 and specify WLC in location A as Primary.

Answer: C

QUESTION 28

Refer to the exhibit. A mobile station in a factory contains an AP configured as a work group bridge that authenticates to a root AP using EAP-FAST. To be able to use the mobile station in further parts of the factory, another root AP is installed and also configured for EAP-FAST. When the mobile station is attempting to roam to the other AP, it loses connection yet can still authenticate to the first one. What is the cause for the failed authentication on RAP2?

RAP1	RAP2
dot11 ssid wlan1 authentication open eap eap authentication network-eap eap authentication key-management wpa version 2 dot1x credentials wgb dot1x eap profile eap1 no ids mfp client eap profile eap1 method fast eap profile eap11 method tls dot1x credentials wgb username cisco password 7 1511021F0725 interface Dot11Radio0 encryption mode ciphers aes-ccm ssid wlan1	dot11 ssid wlan1 authentication open eap eap authentication network-eap eap authentication key-management wpa version 2 dot1x credentials wgb dot1x eap profile eap1 no ids mfp client eap profile eap1 method fast eap profile eap11 method tls dot1x credentials wgb username cisco password 7 1511021F0725 interface Dot11Radio0 encryption mode ciphers aes-ccm ssid wlan1

- A. RAP1 is using a different authentication protocol than RAP2.
- B. RAP2 has a different SSID than RAP1.
- C. RAP1 is using a different encryption than RAP2.
- D. The authentication username and password is different.

Answer: A

QUESTION 29

Refer to the exhibit. A client reports being unable to log into the wireless network. According to the output, which network information should be verified?

```
Apr 8 20:02:55.477: RADIUS(00000031): Send Access-Request
to 10.0.0.3:1234 id 21645/145, len 139
Apr 8 20:02:55.478: RADIUS: authenticator 86 F7 8B 41 0E 9F 44 D1
- 9A F8 E2 07 5D 70 F2 76
Apr 8 20:02:55.478: RADIUS: User-Name [1] 9 "aironet"
Apr 8 20:02:55.478: RADIUS: Framed-MTU [12] 6 1400
Apr 8 20:02:55.478: RADIUS: Called-Station-Id [30] 16 "0005.9a39.0374"
Apr 8 20:02:55.478: RADIUS: Calling-Station-Id [31] 16 "0002.8aa6.304f"
Apr 8 20:02:55.478: RADIUS: Service-Type [6] 6 Login [1]
Apr 8 20:02:55.478: RADIUS: Message-Authenticator [80] 18 "
Apr 8 20:02:55.478: RADIUS: EAP-Message [79] 14 "
omitted
Apr 8 20:03:15.470: RADIUS/DECODE:
parse response: FAIL
Apr 8 20:03:15.470: dot11_auth_dot1x_parse_aaa_resp:
Received server response: FAIL
Apr 8 20:03:15.470: dot11_auth_dot1x_parse_aaa_resp:
found eap pak in server response
Apr 8 20:03:15.470: dot11_auth_dot1x_parse_aaa_resp:
detailed aaa status 1
Apr 8 20:03:15.471: dot11_auth_dot1x_run_fsm:
Executing Action(SERVER_WAIT, SERVER_FAIL) for 0002.8aa6.304f
Apr 8 20:03:15.471: dot11_auth_dot1x_send_client_fail:
Authentication failed for 0002.8aa6.304f
Apr 8 20:03:15.471: %DOT11-7-AUTH_FAILED: Station 0002.8aa6.304f
Authentication failed
```

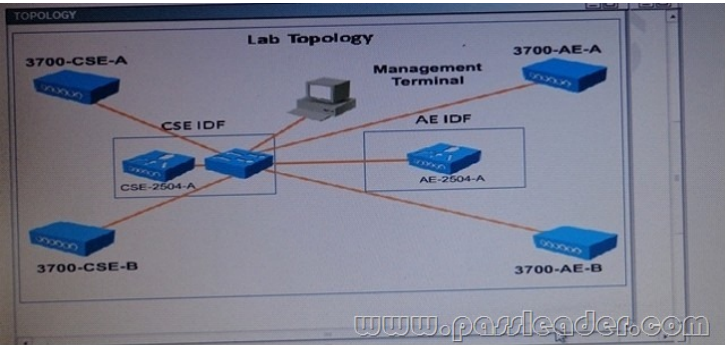
- A. the Failed Attempts log on the authentication server
- B. that the AP has IP connectivity to the authentication server
- C. that the user has an account on the authentication server
- D. that the authentication and accounting configuration are correct

Answer: B

QUESTION 30

Scenario

The Big Engineering IT team has been working in the lab to do some testing of some new features the existing network won't support. They are AP Croups, AP Failover, and Local Web Auth. They have been having problems with all three features. In this test environment the controllers only support the Composite and Structural Engineering and Aerodynamic Engineering groups. All SSIDs should omit the department name. Refer to the exhibit. This is a diagram of the floor plan for the Big Engineering office and the distribution of the departments. The tables below show how the controllers have been configured. Note, not all menu items, text boxes, or radio buttons are active.



BE-GA

Controller Management Interfaces

Name	IP address	Gateway	DHCP Interface
CSE-2504A	192.168.2.98/24	192.168.2.1	192.168.2.98
AE-2504A	192.168.3.98/24	192.168.3.1	192.168.3.98
HF-2504A	192.168.4.98/24	192.168.4.1	192.168.4.98

Composite and Structural Engineering (CSE)

WLANs

Profile Name	SSID
CSE-Engineering	CSE-Engineering
CSE-Contractors	CSE-Contractors
CSE-Employees	CSE-Employees

AP Groups - CSE-WLANs

WLANs	APs
CSE-Engineering	3700-CSE-A
CSE-Contractors	3700-CSE-B
CSE-Employees	

www.passleader.com

CSE-User Names and Passwords

User Name	Password
Jeff Rice	csetest
Lee Webb	csetest

Aerodynamic Engineering

WLANs

Profile Name	SSID
AE-Engineering	Engineering
AE-Contractors	Contractors
AE-Employees	Employees

www.passleader.com

AP Groups - AE-WLANs

WLANs	APs
AE-Engineering	3700-AE-A
AE-Contractors	3700-AE-B
AE-Employees	

AE-User Names and Passwords

User Name	Password
Joan Smith	aetest
Carol Black	aetest

www.passleader.com

When you review the configuration of the test network controller what needs to be changed to resolve the problems? (Choose four.)

- A. Change the High Availability Primary Controller Management Interface IP address.
- B. Remove the current WLANs and replace them with WLANs that have the same SSID names as on the AE-2504A controller.
- C. Add the Local Net User names and passwords.
- D. Change the Layer 2 security to none and Layer 3 Security to Web Policy for the CSE- Contractors WLAN.
- E. Remove me current WLAN from the CSE-WLAN AP Group and add all three of the WLANs configured in the CSE-2504A.
- F. Add the CSE APs to the CSE-WLANs AP-Group.

Answer: BCDF

New 300-370 exam questions from PassLeader 300-370 dumps! Welcome to download the newest PassLeader 300-370 VCE and PDF dumps: <http://www.passleader.com/300-370.html> (115 Q&As --> 147 Q&As --> 159 Q&As --> 173 Q&As)

P.S. Free 300-370 dumps are available on Google Drive shared by PassLeader:

https://drive.google.com/open?id=0B-ob6L_QjGLpM3ZXaF9TdmZSeUU